

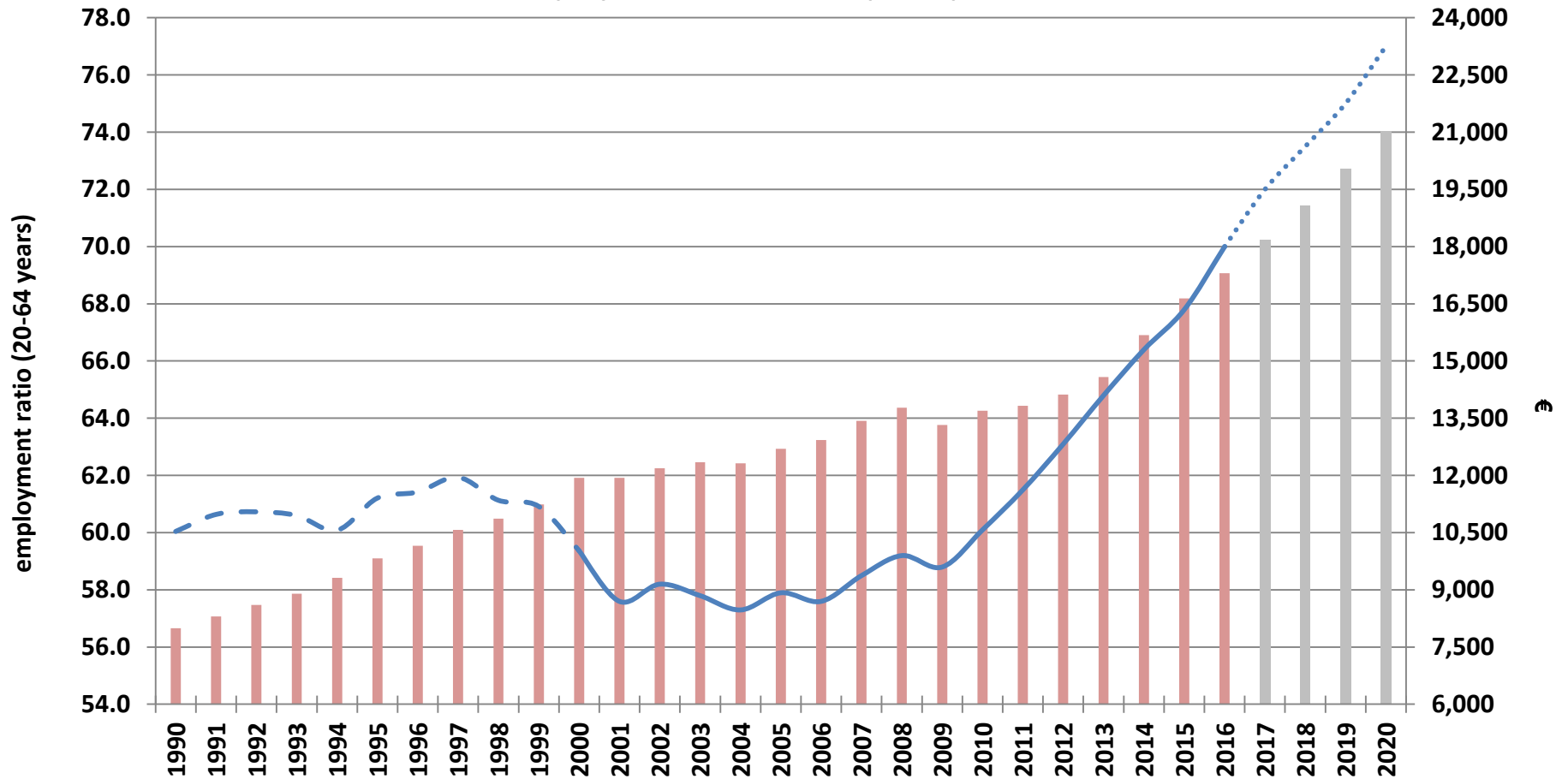
Skills Shortages and the Labour Market

Clyde Caruana
Executive Chairman
Jobsplus



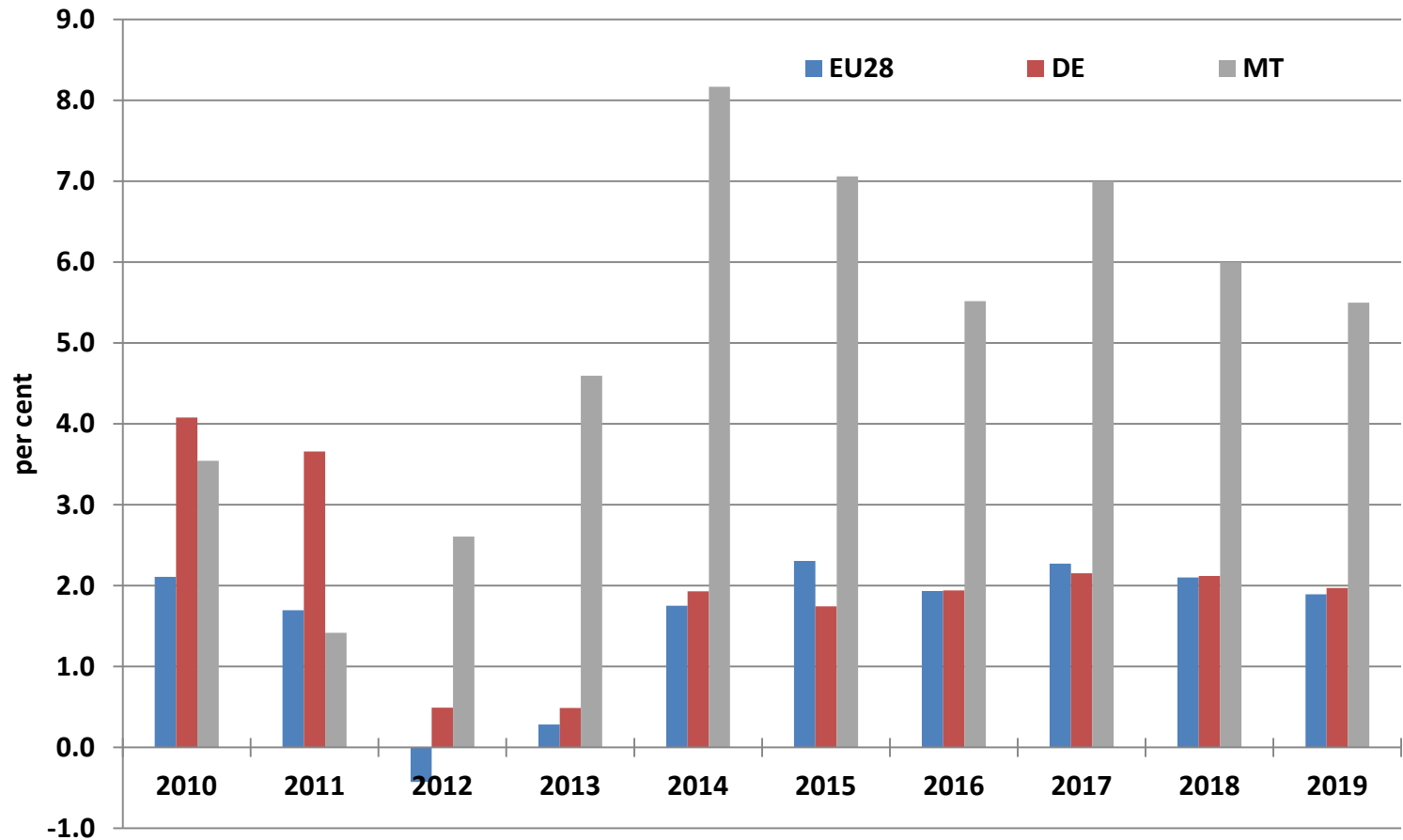
Economic development

Employment ratio vs GDP per capita

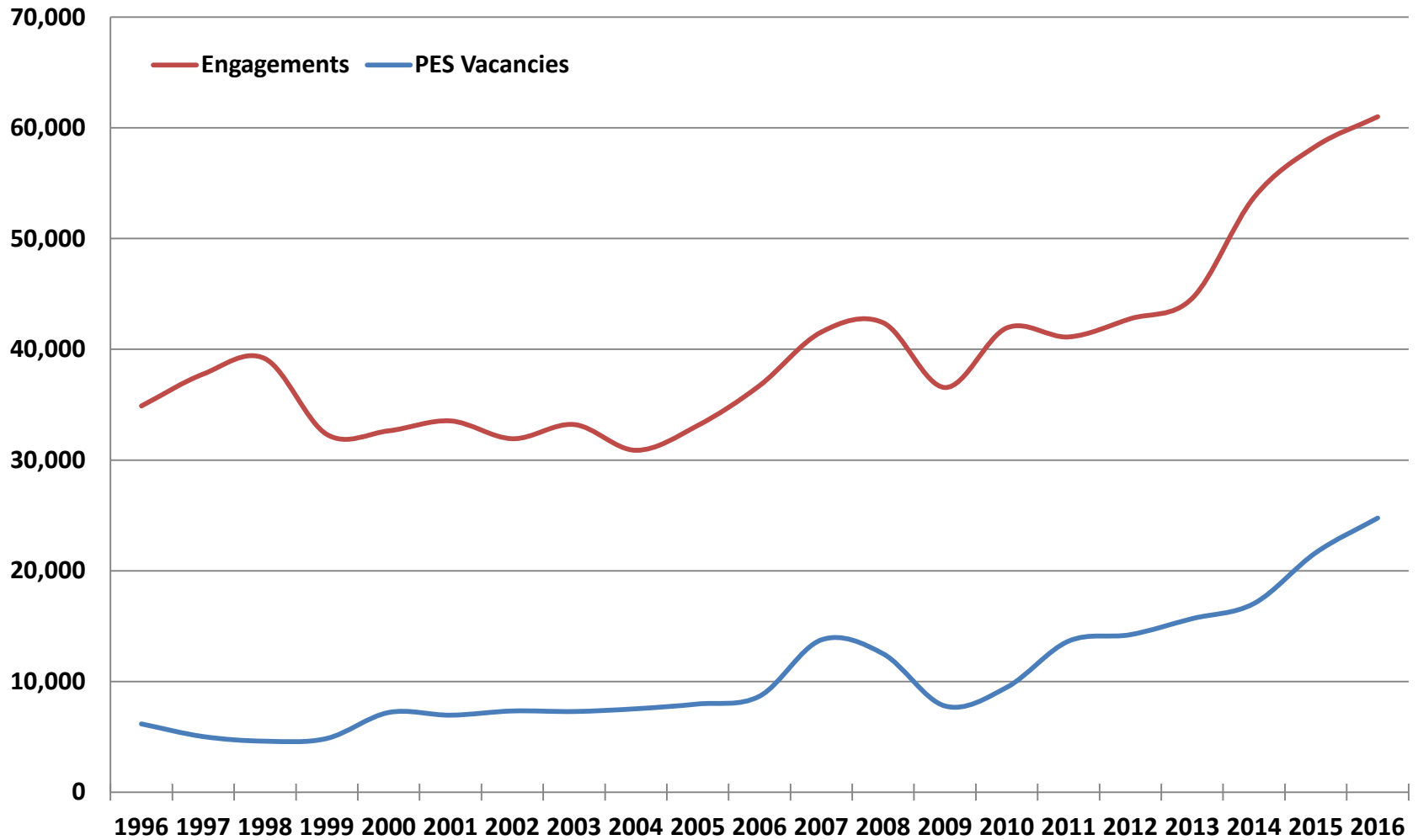


■ GDP per capita at 2005 prices
 - - - estimated employment ratio
 — actual employment ratio
 ⋯ projected employment ratio

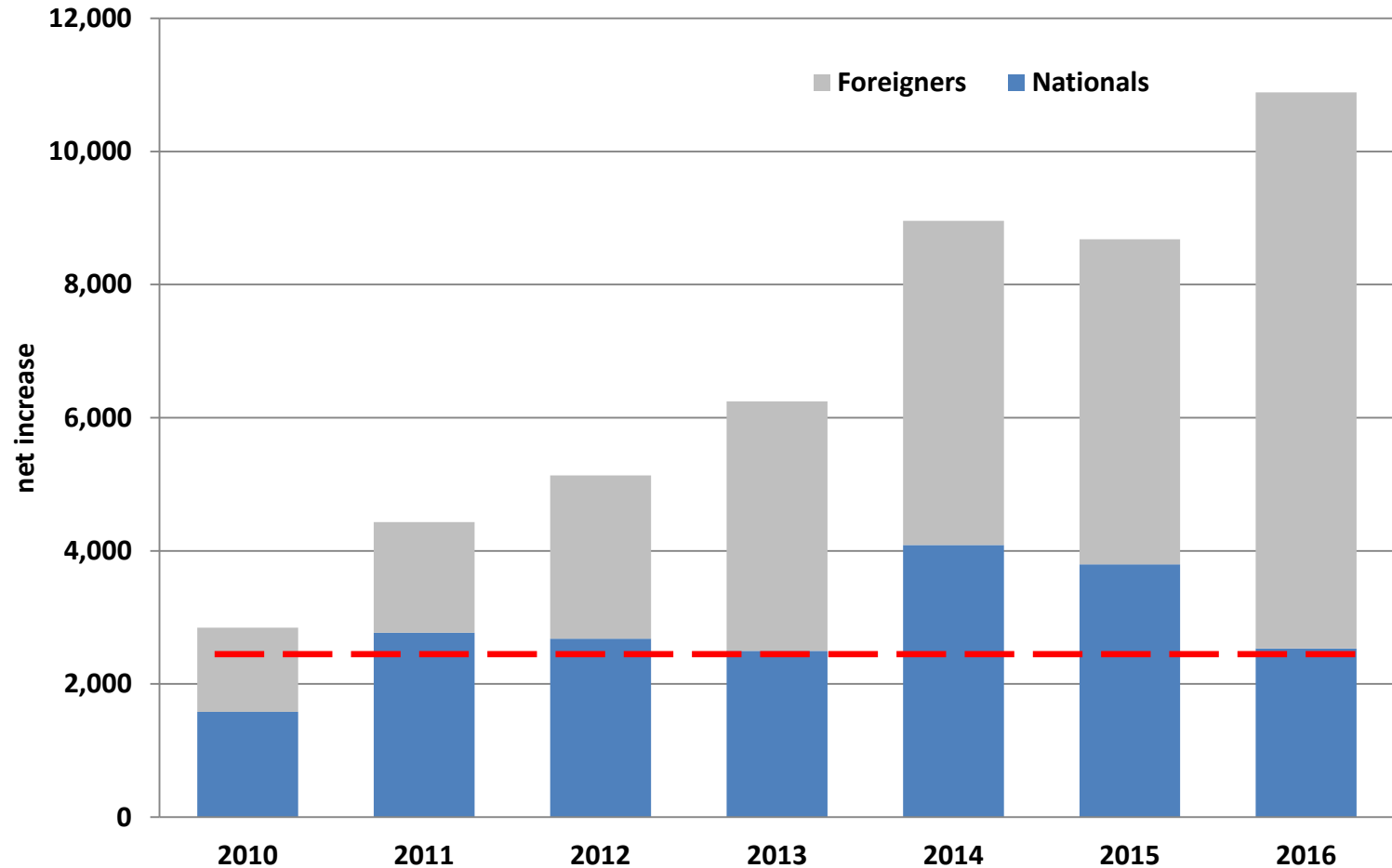
Economic Growth



Demand for labour



Shortage of labour



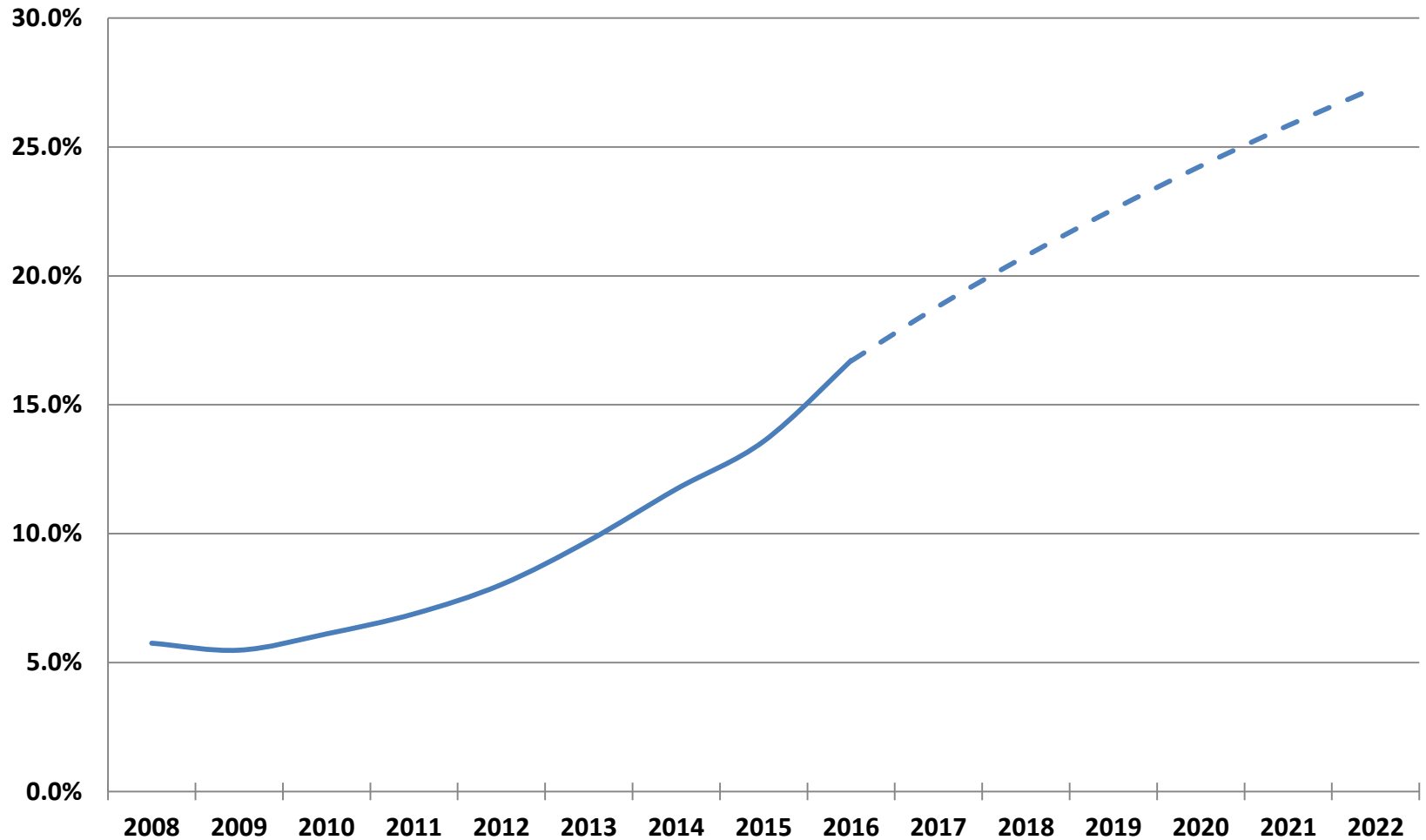
Share of foreign workers by ISCO

	Share of the workforce (%)			Change (+/-p.p.)	
	2004	2010	2016	2004-2010	2010-2016
[1] Managers	6.5	11.1	23.3	4.6	12.1
[2] Professionals	3.0	5.6	14.3	2.6	8.7
[3] Technicians and Associate Professionals	4.3	8.0	17.4	3.7	9.5
[4] Clerks and support workers	1.0	6.0	17.7	5.0	11.7
[5] Services and sales workers	2.9	5.6	17.1	2.7	11.5
[6] Skilled Agricultural, fishery and forestry workers	1.0	2.6	5.2	1.6	2.6
[7] Craft and related trades workers	4.0	8.2	16.2	4.2	8.0
[8] Plant and machine operator and assemblers	1.3	3.5	10.4	2.2	7.0
[9] Elementary Occupations	1.1	3.8	16.8	2.7	13.0
Total	2.6	6.1	16.6	3.4	10.5

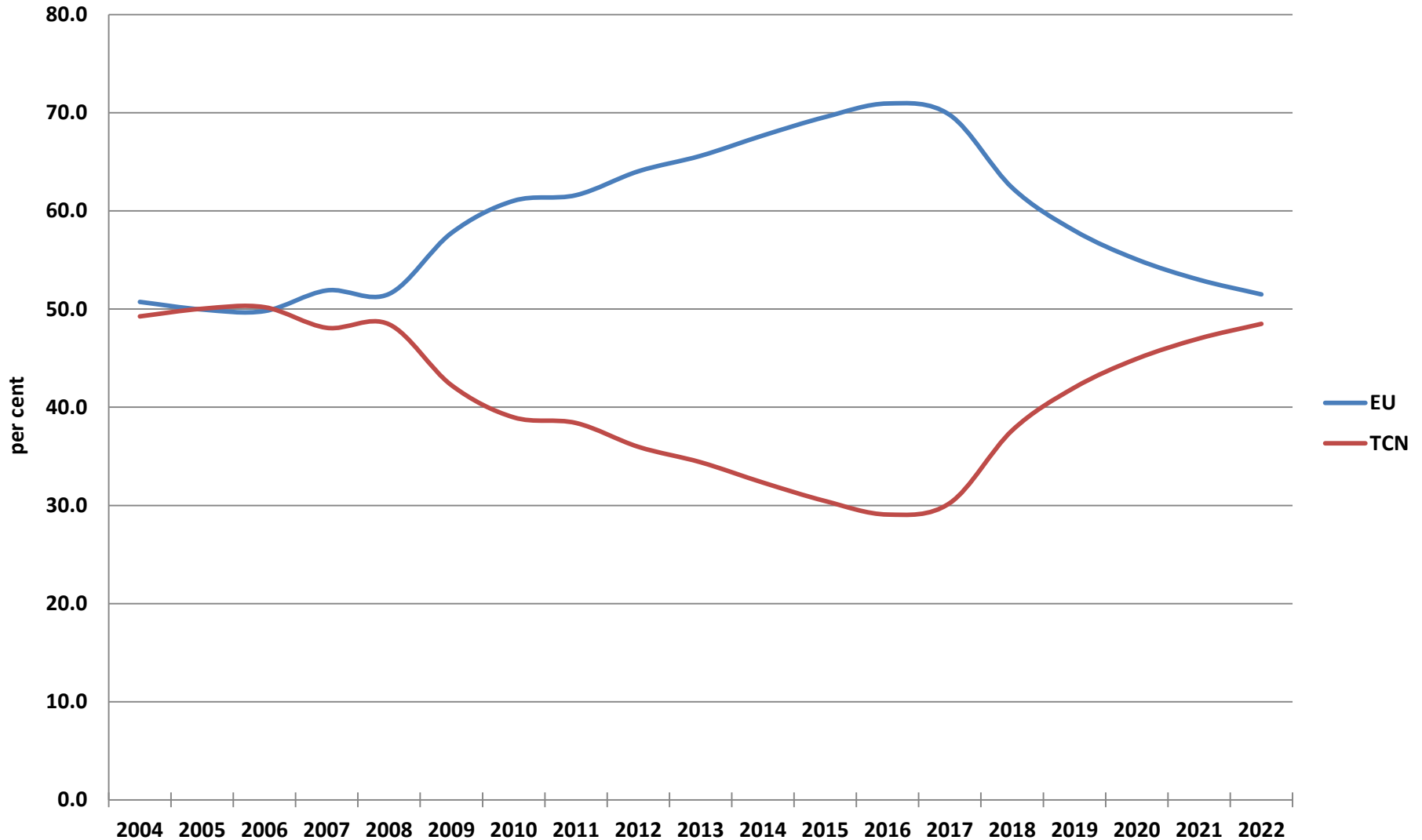
Share of foreign workers by NACE

	Share of the workforce (%)			Change (+/-p.p.)	
	2004	2010	2016	2004-2010	2010-2016
[A] Agriculture, Forestry & Fishing	0.6	1.8	5.9	1.2	4.1
[B] Mining & Quarrying	4.8	2.5	17.2	-2.4	14.7
[C] Manufacturing	2.0	5.0	9.6	2.9	4.7
[D] Electricity, Gas, Steam	0.0	0.0	20.0	0.0	20.0
[E] Water Supply	0.6	2.3	4.0	1.6	1.8
[F] Construction	4.8	7.9	18.3	3.1	10.4
[G] Wholesale & Retail Trade	1.8	2.9	8.8	1.1	5.9
[H] Transportation & Storage	1.7	2.6	11.1	0.9	8.5
[I] Accommodation & Food Service Activities	5.2	11.8	32.6	6.6	20.8
[J] Information & Communication	2.7	7.3	23.8	4.6	16.5
[K] Financial & Insurance Activities	1.6	4.9	13.4	3.3	8.5
[L] Real Estate Activities	1.9	4.4	13.9	2.6	9.5
[M] Professional, Scientific & Technical Activities	6.3	9.6	26.0	3.3	16.4
[N] Administrative & Support Service Activities	5.2	12.4	29.0	7.2	16.6
[O] Public Administration	0.3	1.0	1.7	0.6	0.8
[P] Education	4.1	5.3	9.2	1.2	3.9
[Q] Human Health & Social Work Activities	2.0	6.9	21.1	4.9	14.2
[R] Arts, Entertainment & Recreation	9.1	34.5	56.8	25.4	22.3
[S] Other Service Activities	4.2	7.4	15.5	3.2	8.1
Total	2.6	6.1	16.6	3.4	10.5

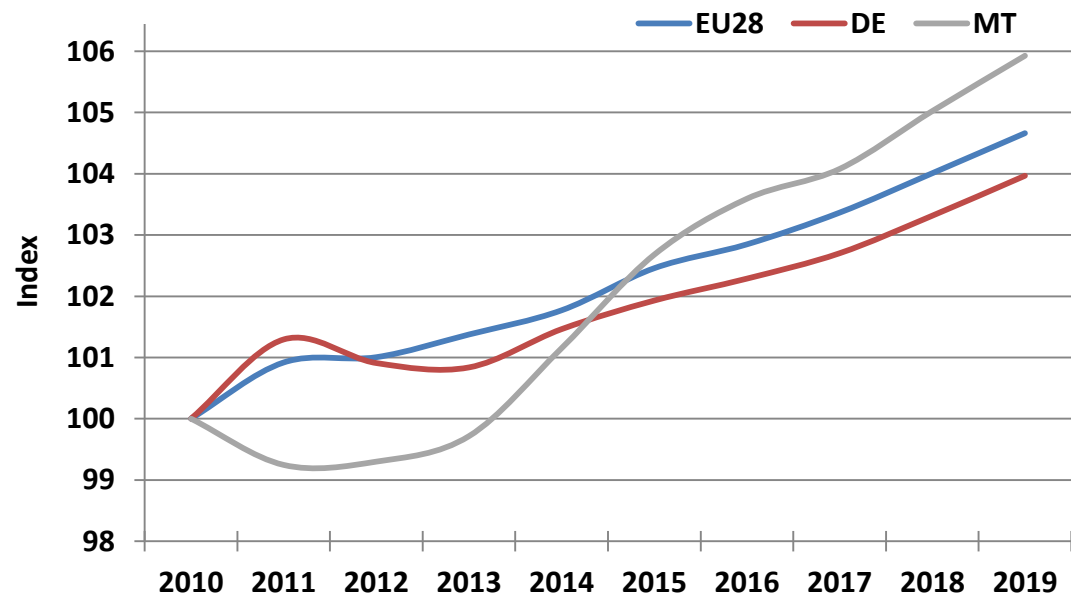
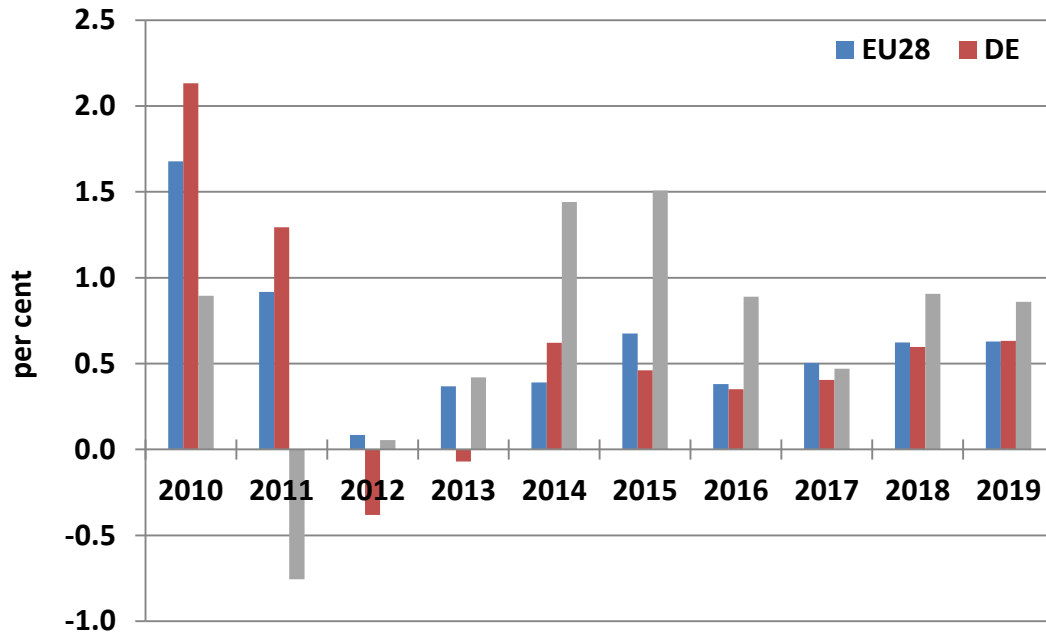
Foreigners as a share of total workforce



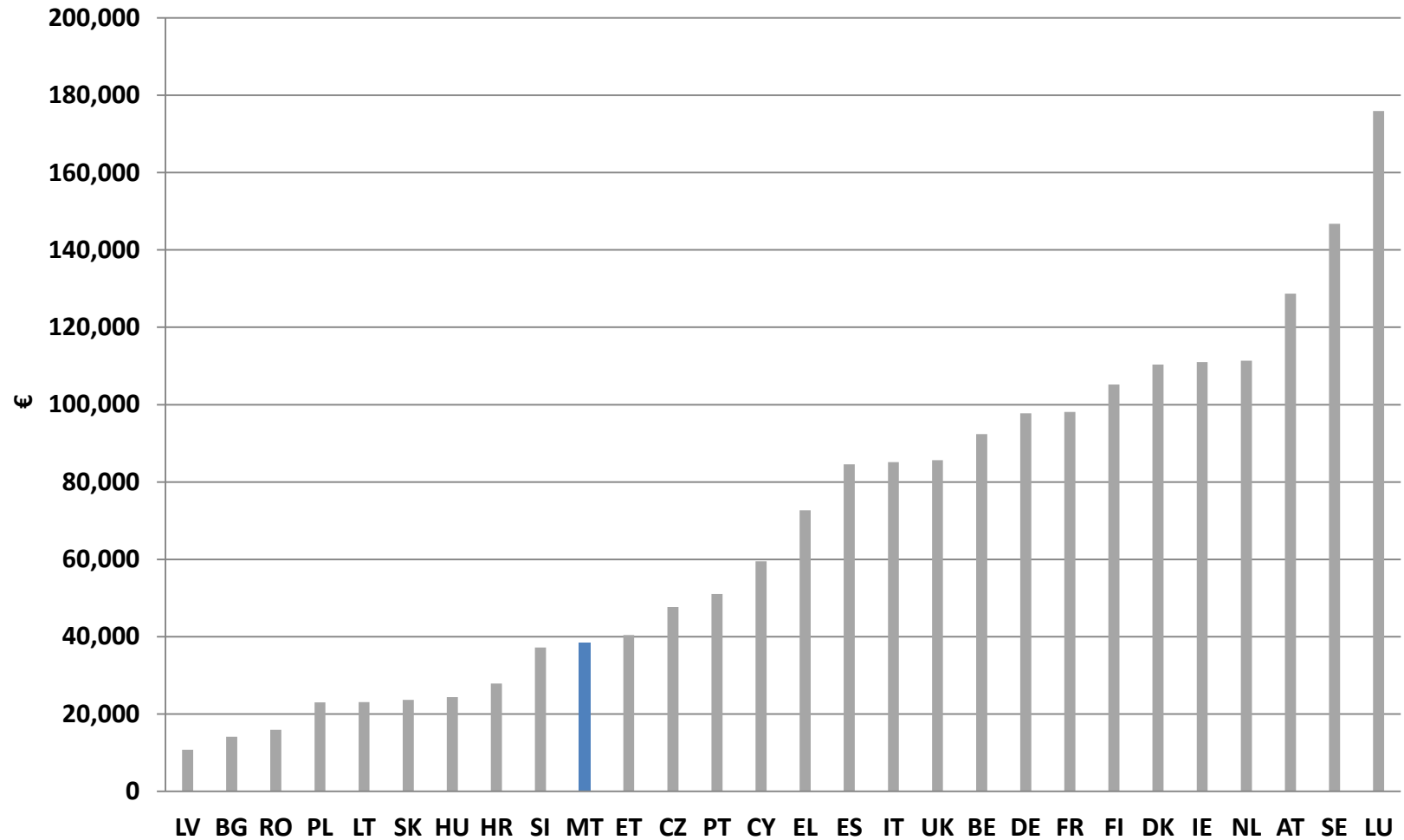
Composition of foreign workers



Labour Productivity



Capital per Capita



Thank You